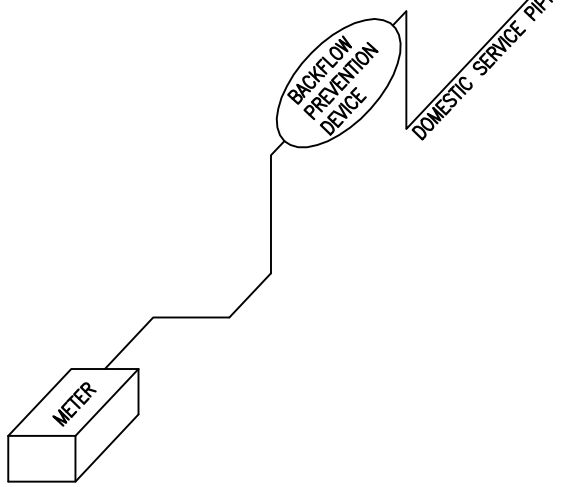
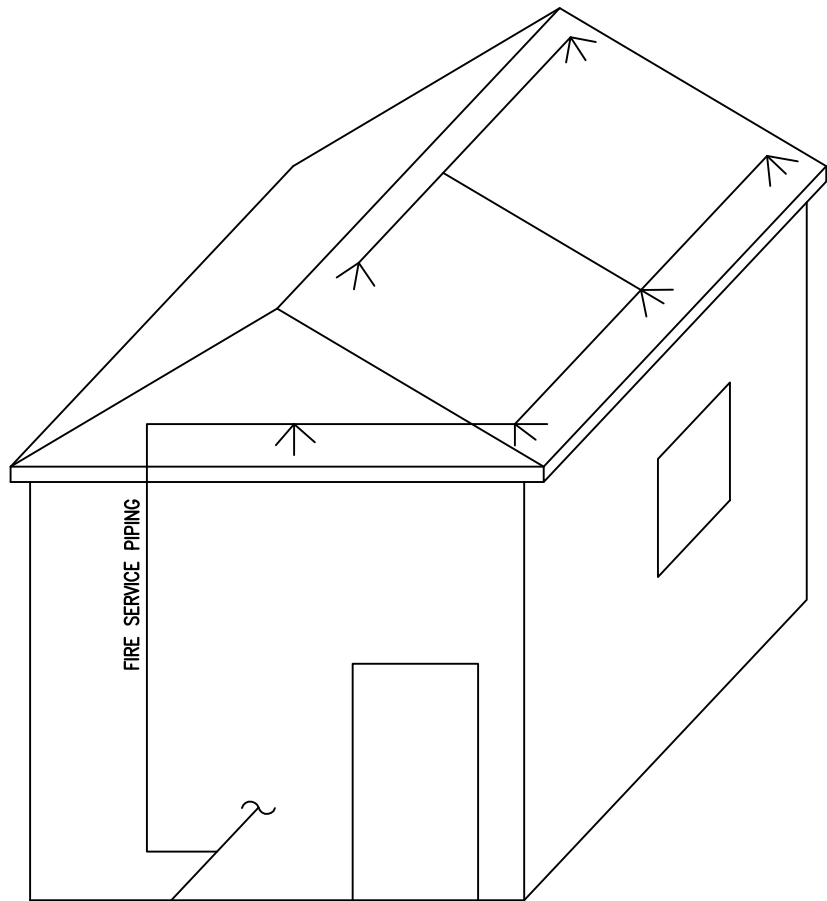


Standard Backflow Protection at Meter

Notes:

1. Annual Testing Required.
2. Expansion Tank Required by California Plumbing Code.
3. All new residential dwellings and/or remodels and additions with fire protection systems shall have a TESTABLE BACKFLOW PREVENTION ASSEMBLY OR A PASSIVE PURGE SYSTEM installed for system protection.
4. All underground piping shall be inspected by District personnel prior to backfill. Coordinate with, Darrin Teisher Helix Water District 619-667-6224



HELIX WATER DISTRICT

CROSS-CONNECTION CONTROL REQUIREMENTS FOR DOMESTIC RESIDENTIAL FIRE SERVICES

TYPE: STANDARD BACKFLOW PROTECTION AT METER

SHEET 1 OF 3

SCALE: NTS

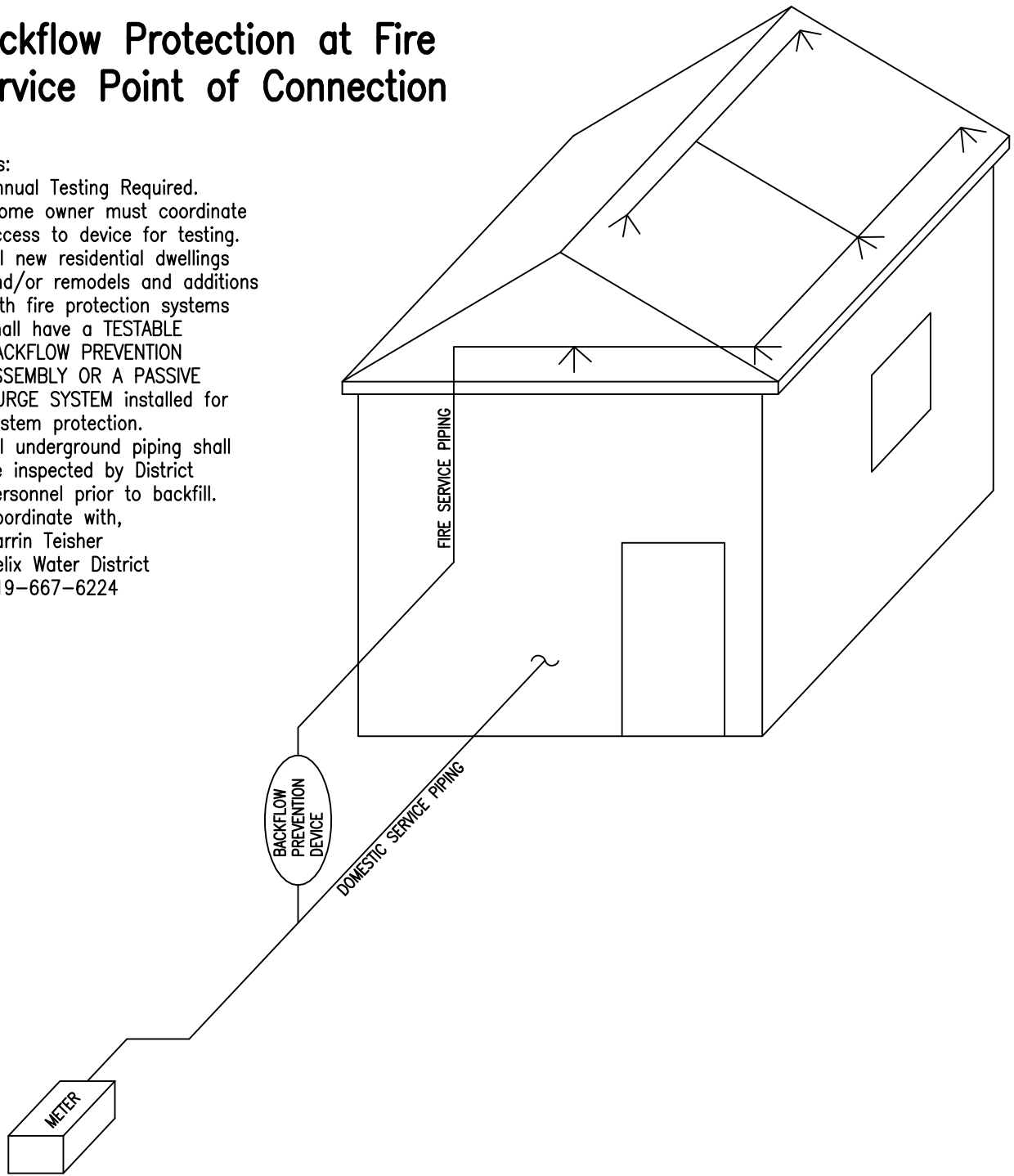
DATE: 3/31/14

RFS-1

Backflow Protection at Fire Service Point of Connection

Notes:

1. Annual Testing Required.
2. Home owner must coordinate access to device for testing.
3. All new residential dwellings and/or remodels and additions with fire protection systems shall have a TESTABLE BACKFLOW PREVENTION ASSEMBLY OR A PASSIVE PURGE SYSTEM installed for system protection.
4. All underground piping shall be inspected by District personnel prior to backfill. Coordinate with, Darrin Teisher
Helix Water District
619-667-6224



HELIX WATER DISTRICT

CROSS-CONNECTION CONTROL REQUIREMENTS
FOR DOMESTIC RESIDENTIAL FIRE SERVICES

TYPE: BACKFLOW PROTECTION AT FIRE SERVICE POINT OF CONNECTION

SHEET 2 OF 3

SCALE: NTS

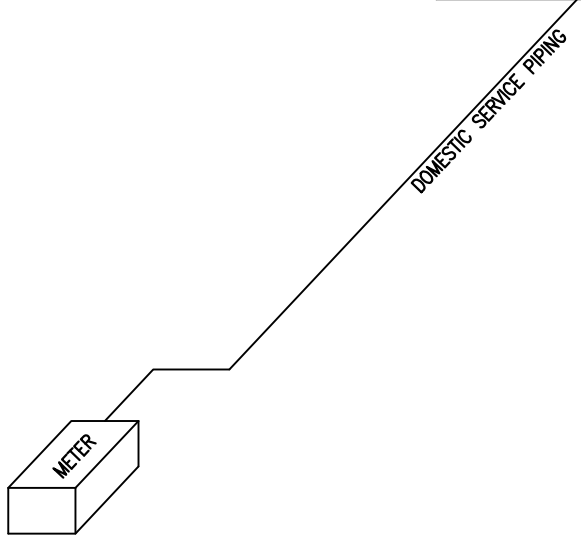
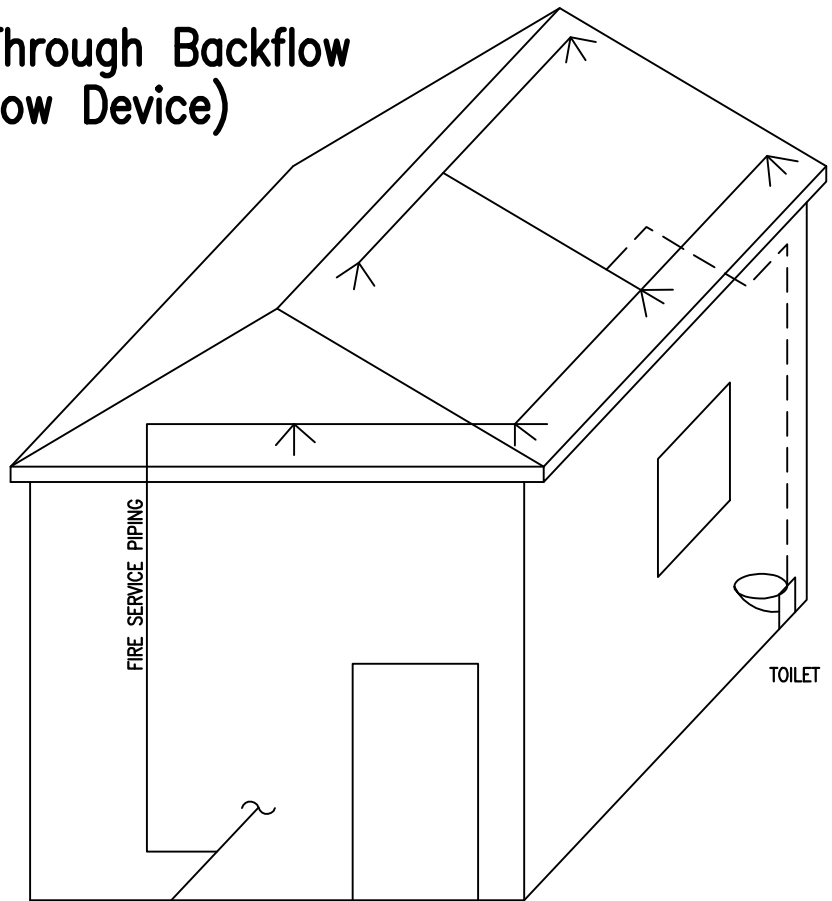
DATE: 3/31/14

RFS-2

Passive Purge/Flow Through Backflow Protection (No Backflow Device)

Notes:

1. Involves inspection before activation by HWD or Building Inspectors.
2. Fixture connected to cannot have flow above alarm point.
3. All new residential dwellings and/or remodels and additions with fire protection systems shall have a TESTABLE BACKFLOW PREVENTION ASSEMBLY OR A PASSIVE PURGE SYSTEM installed for system protection.
4. All piping shall be inspected by District personnel during rough plumbing and at finish.
5. Contractor must provide an isolation valve on the domestic piping AFTER the F.S. POC for inspection. Coordinate with,
Darrin Teisher
Helix Water District
619-667-6224



HELIX WATER DISTRICT

CROSS-CONNECTION CONTROL REQUIREMENTS
FOR DOMESTIC RESIDENTIAL FIRE SERVICES

TYPE: PASSIVE PURGE/FLOW THROUGH BACKFLOW PROTECTION

SHEET 3 OF 3

SCALE: NTS

DATE: 3/31/14

RFS-3